

KALMAR



ANTIQUES

For the Finest Range of Antique Jewellery, Watches and Pocket Watches in Sydney



*Where you can hold a piece of history
in your hand...*

Shop 25 • Level 2 Queen Victoria Building • 455 George Street
Sydney NSW 2000 • Tel: 02 9264 3663 • Fax: 02 9264 2663
sales@kalmarantiques.com.au • www.kalmarantiques.com.au

KALMAR

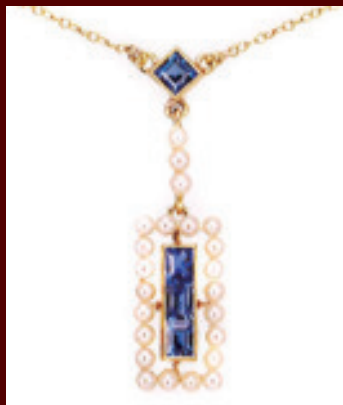


ANTIQUES

For the Finest Range of Antique Jewellery, Watches and Pocket Watches in Sydney



18ct and platinum ruby and diamond
Art Deco negligee necklace made
in France c.1920, \$11,200.



15ct sapphire and pearl
Art Deco necklace c.1920, \$3850.



9ct rose gold bracelet set with peridot c.1910, \$3750.



18ct citrine brooch with two swallows
c.1910, \$2150.



Platinum diamond Art Deco brooch
c.1930, \$7200.

Shop 25 • Level 2 Queen Victoria Building • 455 George Street
Sydney NSW 2000 • Tel: 02 9264 3663 • Fax: 02 9264 2663

sales@kalmarantiques.com.au • www.kalmarantiques.com.au

KALMAR



ANTIQUES

For the Finest Range of Antique Jewellery, Watches and Pocket Watches in Sydney



9ct rose and yellow gold collar c.1880, \$5800 with a 15ct pearl and diamond locket c.1880, \$2950. (Both items are sold separately)

To all of our valued clients, this has been a difficult year for all of us, and there will be little need for me to go on about how hard it has been for many. However, we must remember that like a starting line, there is always an end, and as with all events of this magnitude, we will pull through this and embrace once again.

So let's not dwell on the past, rather let's look forward with hope and optimism. I hope you can all take a moment to enjoy the small, but precious moments in life. And what better way to do this than browsing through this year's Annual Catalogue filled with some truly magnificent pieces. From some of the beautiful Art Deco bracelets to incredible and rare early Australian pieces such as the pearl brooch dating from the 1850s and attributed to one of Australia's earliest jewellers, Alfred Lorking (page 37), to the two incredible sterling silver centrepieces depicting Australian flora and fauna attributed to Julius Schomburgk (pages 34 & 35), or the beautiful brooch by one of Australia's leading female jewellers, Rhoda Wager (page 37) – these are all wonderful and exciting pieces.

Please enjoy browsing through this Catalogue and if you are in the city, please come and visit or alternatively go to our website at www.kalmarantiques.com.au

*On behalf of everyone here at Kalmar Antiques, I would like wish everyone a safe and prosperous 2022.
Kindest regards, Marlene Kalmar.*

Front cover: 15ct enamel and pearl demi-parure c.1870, \$11,500.

Shop 25 • Level 2 Queen Victoria Building • 455 George Street
Sydney NSW 2000 • Tel: 02 9264 3663 • Fax: 02 9264 2663

sales@kalmarantiques.com.au • www.kalmarantiques.com.au

For the Finest Range of Antique Jewellery, Watches and Pocket Watches in Sydney



(L) 15ct ruby and pearl bangle made by Francis Flint c.1900, \$4400.
Francis Flint was one of the few early Australian jewellers working from Tasmania.
(R) 15ct pearl bangle c.1900, \$3350.



15ct pearl and turquoise bangle made by Aronson & Co
c.1900, \$4250.



15ct Etruscan bangle c.1880, \$4950.

KALMAR



ANTIQUES

For the Finest Range of Antique Jewellery, Watches and Pocket Watches in Sydney



(L) 18ct pearl and diamond bangle c.1880, \$8600.
(R) 15ct pearl and diamond bangle c.1880, \$5900.



15ct pearl and aquamarine bangle by Duggin, Shappere
& Co c.1900, \$4950.



15ct pearl bangle c.1890, \$5300.

For the Finest Range of Antique Jewellery, Watches and Pocket Watches in Sydney



(L) 15ct double sided gold locket c.1880, \$2200.

(R) 15ct locket made in 1919, \$2200.



15ct emerald and pearl locket c.1880, \$2300.



18ct hand engraved locket c.1890, \$1950.

KALMAR



ANTIQUES

For the Finest Range of Antique Jewellery, Watches and Pocket Watches in Sydney



9ct bloodstone and carnelian spinner made in 1905, \$1450.



9ct bloodstone and carnelian spinner made in 1925, \$750.



18ct pocket watch key with a seal and locket that can be worn as a pendant c.1870, \$1750.



9ct bloodstone and carnelian spinner made in 1889, \$1450.



9ct bloodstone and carnelian spinner made in 1895, \$1450.

Shop 25 • Level 2 Queen Victoria Building • 455 George Street
Sydney NSW 2000 • Tel: 02 9264 3663 • Fax: 02 9264 2663

sales@kalmarantiques.com.au • www.kalmarantiques.com.au

KALMAR

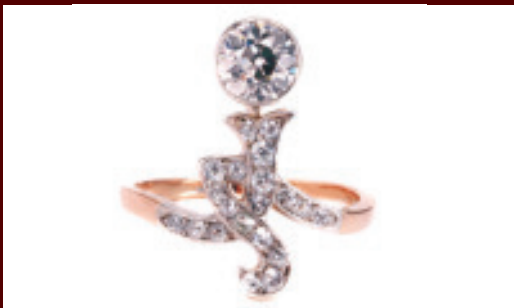


ANTIQUES

For the Finest Range of Antique Jewellery, Watches and Pocket Watches in Sydney



18ct rose gold retro era diamond ring made in France c.1950, \$8800.



14ct Art Nouveau diamond ring c.1910, \$18,500.



(L) 18ct diamond cluster ring c.1930, \$4200.
(R) 18ct double row diamond cluster ring c.1910, \$4400.

Shop 25 • Level 2 Queen Victoria Building • 455 George Street
Sydney NSW 2000 • Tel: 02 9264 3663 • Fax: 02 9264 2663

sales@kalmarantiques.com.au • www.kalmarantiques.com.au

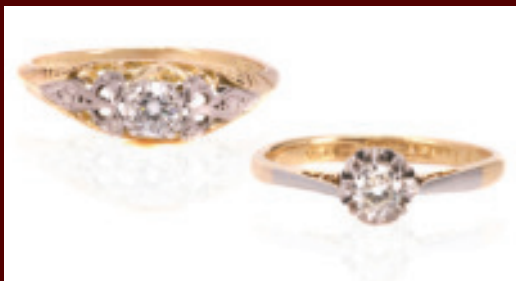
For the Finest Range of Antique Jewellery, Watches and Pocket Watches in Sydney



Platinum retro era diamond ring c.1950, \$8800.



18ct and platinum Art Deco diamond ring
c.1920, \$7800.



(L) 18ct and platinum Art Deco diamond ring c.1940, \$1850.
(R) 18ct and platinum Art Deco diamond ring c.1920, \$1850.

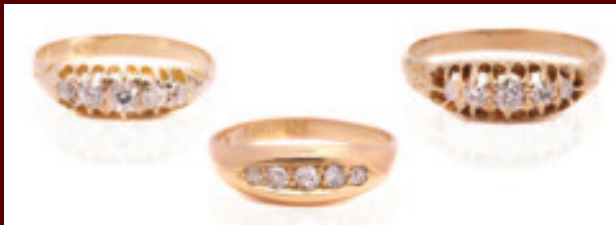
For the Finest Range of Antique Jewellery, Watches and Pocket Watches in Sydney



18ct and platinum Art Deco diamond ring c.1930, \$8750.



Platinum diamond ring made by Belais c.1920, \$4600.

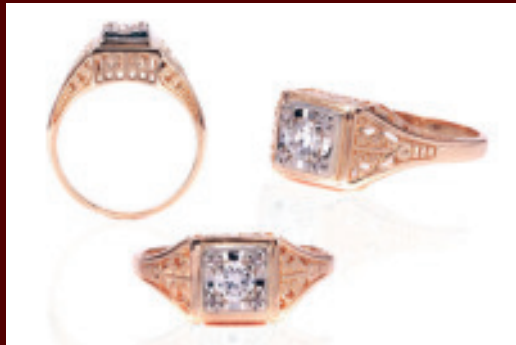


(L) 18ct 5 stone diamond ring c.1890, \$3450.
 (C) 18ct 5 stone diamond ring made in 1912, \$1600.
 (R) 18ct 5 stone diamond ring c.1910, \$1650.

For the Finest Range of Antique Jewellery, Watches and Pocket Watches in Sydney



18ct and platinum Art Deco diamond ring c.1920, \$7800.

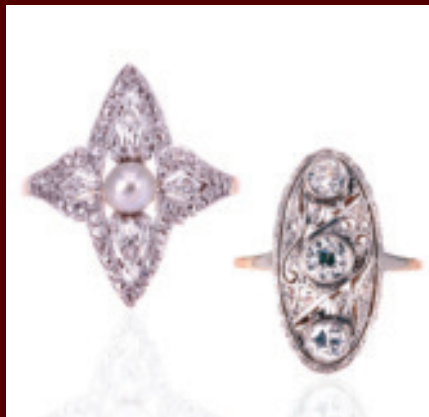


14ct yellow gold and diamond ring c.1987, \$2300.

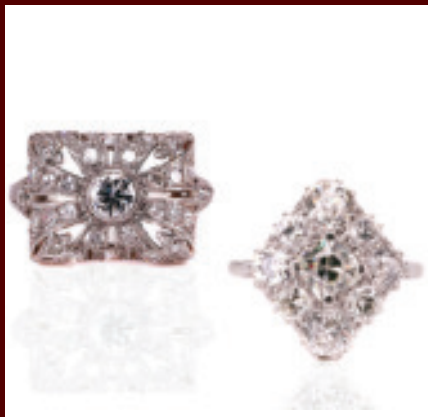


(L) 18ct mine cut diamond ring c.1870, \$4400.
(C) Platinum Art Deco diamond ring c.1920, \$11,600.
(R) 18ct and platinum diamond ring c.1920, \$2150.

For the Finest Range of Antique Jewellery, Watches and Pocket Watches in Sydney



(L) 0.34ct of diamonds and pearl ring c.1920, \$4800. (R) 18ct yellow gold and platinum oval ring with diamonds totalling 0.92ct c.1920, \$12,800.



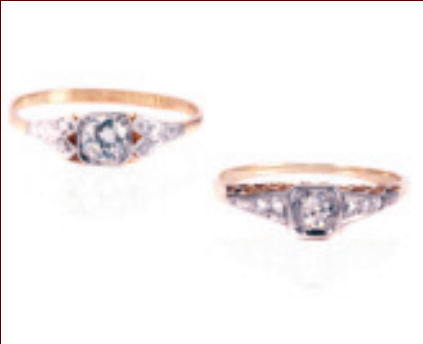
(L) Platinum Art Deco diamond ring c.1920, \$8700. (R) Platinum Art Deco diamond ring c.1920, \$29,800.



(L) Platinum handmade ring set with a 1.75ct antique European cut diamond with more antique diamonds on the side, \$32,800.
(R) Platinum handmade ring set with a 1.58ct antique mine cut diamond with more diamonds on the side, \$24,600.

Both of these rings were hand made by our Master Jeweller and are an example of what we can make for you.

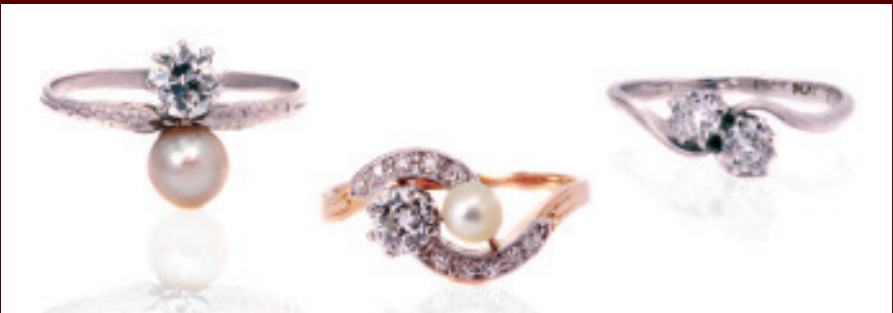
For the Finest Range of Antique Jewellery, Watches and Pocket Watches in Sydney



(L) 18ct yellow and white gold Art Deco diamond ring c.1920, \$2750.
(R) 18ct and platinum Art Deco diamond ring c.1920, \$3300.



Platinum Art Deco diamond ring made in France c.1940, \$32,500.



(L) Platinum diamond and pearl 'Toi et Moi' ring c.1920, \$6200.
(C) 18ct and 0.42ct diamond and pearl 'Toi et Moi' ring c.1900, \$5300.
(R) 18ct white gold and platinum with a 0.30ct diamond 'Toi et Moi' ring c.1930, \$4600.

'Toi et Moi' is a French term meaning 'You and Me' and is used for rings with two main stones. It is believed to have started when Napoleon gave Josephine a sapphire and diamond engagement ring in 1776.

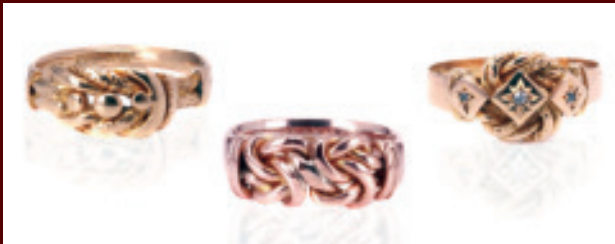
For the Finest Range of Antique Jewellery, Watches and Pocket Watches in Sydney



(L) 18ct ruby and diamond snake ring made in 1894, \$6200. (R) 18ct diamond snake ring made in 1906, \$2650.



18ct rose and yellow gold fancy ring with diamond set tassels c.1970, \$2800.



(L) 18ct fancy ring made in 1919, \$1800. (C) 9ct rose gold fancy knot ring made in 1901, \$1750. (R) 18ct gold and fancy diamond ring c.1918, \$1850.



(L) 18ct pearl ring c.1895, \$1450.
(R) 18ct diamond ring c.1895, \$2400.

For the Finest Range of Antique Jewellery, Watches and Pocket Watches in Sydney



15ct diamond and pearl
pendant brooch c.1920,
\$2550.



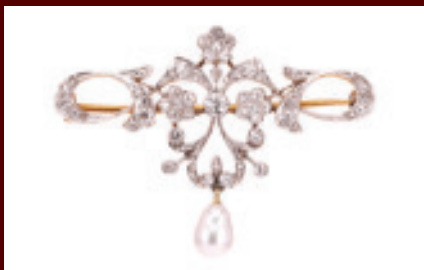
18ct yellow gold and platinum Art Nouveau
diamond pendant c.1910, \$12,800.



18ct and platinum Art Deco
diamond and pearl pendant
c.1920, \$1600.



(L) Platinum pearl and diamond brooch
c.1920, \$1800. (R) 15ct and platinum pearl
and diamond brooch c.1920, \$1800.



18ct and platinum diamond and pearl
brooch c.1910, \$5300.

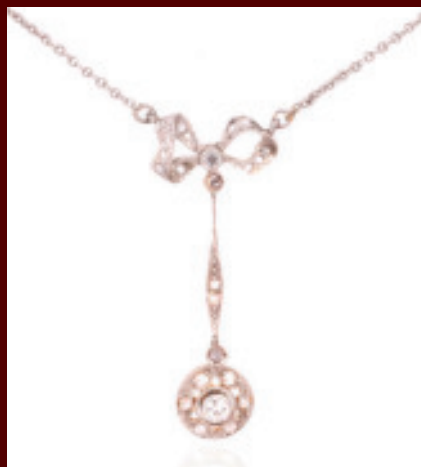
For the Finest Range of Antique Jewellery, Watches and Pocket Watches in Sydney



Platinum Art Deco diamond necklace
c.1920, \$14,250.



14ct and platinum pearl and diamond
drop necklace c.1910, \$4800.



14ct gold and platinum diamond necklace
c.1920, \$5250.



15ct and platinum diamond and pearl
necklace c.1920, \$2800.

KALMAR



ANTIQUES

For the Finest Range of Antique Jewellery, Watches and Pocket Watches in Sydney



Platinum Art Deco diamond bracelet c.1920, \$32,600.



18ct and platinum Art Deco diamond bracelet c.1920, \$8650.



Platinum Art Deco emerald and diamond bracelet c.1920, \$48,800.

Shop 25 • Level 2 Queen Victoria Building • 455 George Street
Sydney NSW 2000 • Tel: 02 9264 3663 • Fax: 02 9264 2663

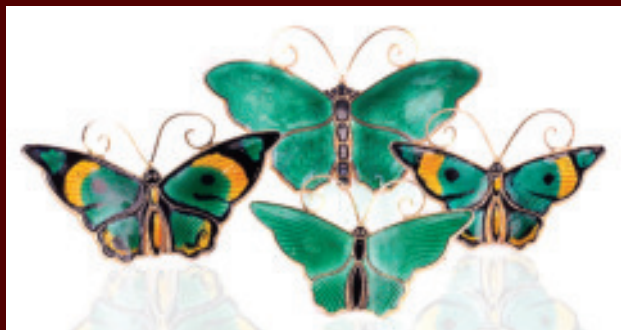
sales@kalmarantiques.com.au • www.kalmarantiques.com.au

For the Finest Range of Antique Jewellery, Watches and Pocket Watches in Sydney



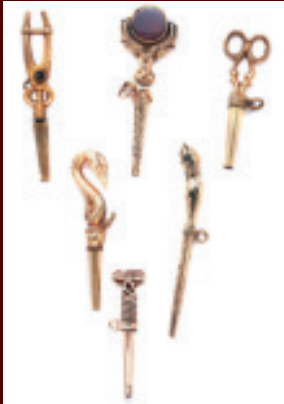
(L) Sterling silver enamel brooch by Volmer Bahner c.1965, \$750. (Back centre) Very large sterling silver enamel brooch David Andersen c.1930, \$1450. (Front centre) Small sterling silver enamel brooch by David Andersen c.1930, \$550. (R) Sterling silver enamel brooch by Ivar Holth c.1945, \$750.

(L) Sterling silver enamel brooch by Hroar Prydz c.1930, \$650. (Back centre) Large sterling silver enamel brooch by Hroar Prydz c.1930, \$1450. (Front centre) Sterling silver enamel brooch by Ivar Holth c.1945, \$525. (R) Sterling silver enamel brooch by Ivar Holth c.1945, \$650.



(L) Sterling silver enamel brooch by David Andersen c.1930. (Back top) Large sterling silver enamel brooch by David Andersen c.1930, \$1450. (Front centre) Sterling silver enamel brooch by David Andersen c.1930, \$825. (R) Sterling silver enamel brooch by David Andersen c.1930, \$750.

For the Finest Range of Antique Jewellery, Watches and Pocket Watches in Sydney



Top row: (L) Gold cased 'Engineer' pocket watch key, \$375. (C) 10ct pocket watch key with a swivel \$750. (R) Gold cased pocket watch key in the form of scissors, \$375. Lower row: (L) Gold cased pocket watch key in the form of a swan, \$375. (C) 9ct pocket watch key with a seal end 9ct, \$850. (R) Gold cased pocket watch key in the form of a hoof, \$275.

Top row: (L) Gold cased pocket watch key with a blue enamel cross and secret locket c.1870, \$380. (C) Gold cased pocket watch key set with orange paste c.1870, \$350. (R) Gold cased pocket watch key enamel star locket \$380. Lower row: (L) Gold cased turquoise pocket watch key c.1880, \$325. (C) Gold cased turquoise pocket watch key c.1880 \$325. (R) Gold cased turquoise pocket watch key c.1880, \$325.



Top row: (L) Gold cased pocket watch key with purple paste c.1870, \$365. (C) Gold cased pocket watch key with orange stone c.1870, \$325. (R) Gold cased pocket watch key with clear stone c.1870, \$325. Lower row: (L) Gold cased pocket watch key c.1870, \$350. (C) Gold cased pocket watch key with a pink stone c.1870, \$385. (R) Gold cased pocket watch key c.1870, \$350.

These antique pocket watch keys date from the 1840s to the 1870s and are able to not only wind pocket watches, but would also make very unique and special pendants to wear on a necklace or bracelet.

For the Finest Range of Antique Jewellery, Watches and Pocket Watches in Sydney



18ct rose gold diamond set retro era earrings c.1950, \$6200.



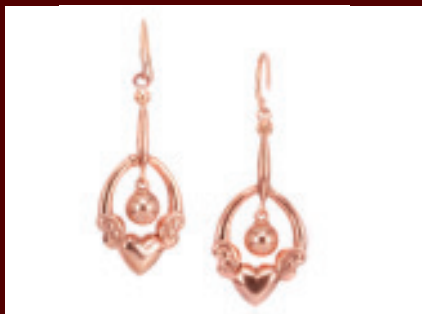
18ct and pearl earrings from the Arts & Crafts era c.1890, \$2600.



9ct earrings set with a pearl made in 1892, \$1200.



Fancy gold cased drop earrings c.1880, \$1925.



9ct drop earrings c.1910, \$1250.

For the Finest Range of Antique Jewellery, Watches and Pocket Watches in Sydney



18ct and platinum 3.75ct non-heat treated Ceylonese sapphire and diamond earrings c.1910, \$24,600.



18ct sapphire and diamond cluster earrings, \$8300.



Platinum ruby and diamond earrings c.1970, \$14,800.



15ct agate drop earrings c.1880, \$3800.

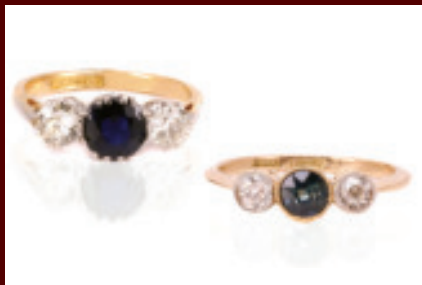


(L) Long tortoiseshell drop earrings c.1890, \$1850. (R) Bog oak and pearl drop earrings c.1860, \$1100.



Bohemian garnet drop earrings c.1880, \$1200.

For the Finest Range of Antique Jewellery, Watches and Pocket Watches in Sydney



(L) 18ct and platinum sapphire and diamond ring c.1930, \$7450. (R) 18ct and platinum sapphire and diamond ring c.1920, \$4800.



(L) Platinum Art Deco sapphire and diamond ring c.1920, \$8200. (R) Platinum fancy sapphire and diamond cluster ring c.1920, \$12,800.



18ct ring set with a 2.0ct non-heat treated Ceylonese sapphire and surrounded by diamonds c.1910, \$23,500.



(L) 18ct sapphire and diamond ring made in 1949, \$4200. (R) 18ct sapphire and diamond ring c.1920, \$5200.



18ct sapphire, diamond and ruby ring c.1970, \$5800.

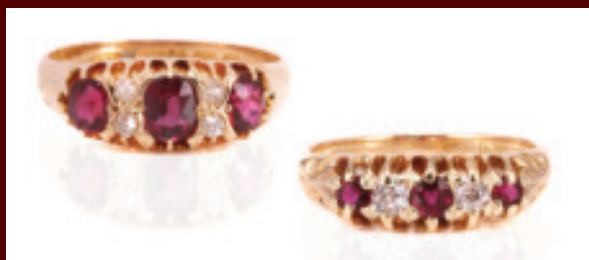
For the Finest Range of Antique Jewellery, Watches and Pocket Watches in Sydney



18ct ruby and diamond ring made in 1890, \$2200.



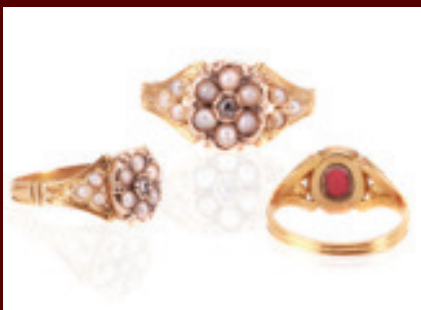
18ct white gold ruby and diamond ring c.1970, \$4300.



(L) 18ct ruby and diamond ring made in 1897, \$5650.
(R) 18ct ruby and diamond ring made in 1909, \$3600.



18ct ruby and pearl ring with a secret locket on the reverse c.1860, \$3300.



18ct yellow gold pearl and diamond ring with a locket underneath c.1870, \$2150.

For the Finest Range of Antique Jewellery, Watches and Pocket Watches in Sydney



18ct and platinum emerald and diamond
Art Deco ring c.1920, \$14,650.
(R) Platinum emerald and diamond
Art Deco ring c.1920, \$26,800.



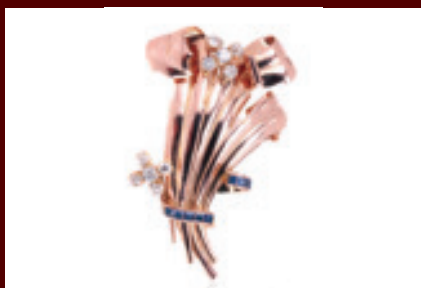
Platinum emerald and diamond retro era
earrings c.1950, \$12,600.



Platinum jade and diamond ring c.1920, \$5600.



18ct rose gold retro era sapphire and
diamond earrings c.1950, \$3650.



18ct rose gold retro era rose gold
sapphire and diamond brooch
c.1950, \$3900.

For the Finest Range of Antique Jewellery, Watches and Pocket Watches in Sydney



(L) 18ct aquamarine and diamond ring c.1930, \$5300. (R) 18ct aquamarine and diamond ring c.1960, \$7450.



18 carat rose gold retro era aquamarine ring c.1950, \$6800.



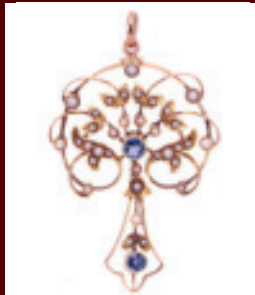
9ct aquamarine and pearl necklace made by Joseph Lawrence c.1910, \$1850.



15ct aquamarine and pearl pendant c.1910, \$2700. (R) 9ct aquamarine and pearl pendant c.1910, \$2350.



18ct and platinum aquamarine and diamond earrings c.1920, \$8600.



15ct gold sapphire and pearl pendant c.1890, \$2950.

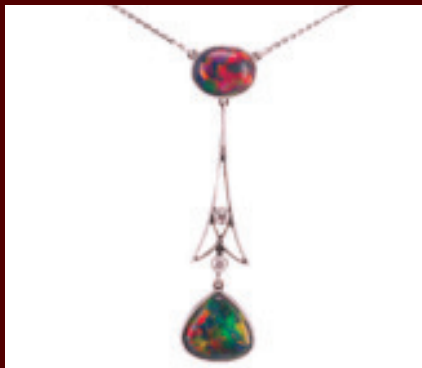


14ct aquamarine and diamond earrings c.1950, \$5900.

For the Finest Range of Antique Jewellery, Watches and Pocket Watches in Sydney



18ct white gold Lightning Ridge black opal and diamond earrings c.1930, \$3300.



18ct solid Lightning Ridge black opal and diamond necklace c.1930, \$8600.



15ct Lightning Ridge black opal ring c.1930, \$5800.



9ct boulder opal necklace c.1910, \$6200.



15ct opal and diamond necklace c.1920, \$7200.

KALMAR



ANTIQUES

For the Finest Range of Antique Jewellery, Watches and Pocket Watches in Sydney



18ct opal and diamond ring c.1900, \$2800.



18ct and platinum opal and diamond ring
c.1930, \$6400.



18ct natural pearl and opal Art Nouveau necklace c.1895, \$14,500.



15ct opal brooch c.1910, \$2600.



9ct rose and yellow gold opal
doublet brooch c.1930, \$1400.

Shop 25 • Level 2 Queen Victoria Building • 455 George Street
Sydney NSW 2000 • Tel: 02 9264 3663 • Fax: 02 9264 2663

sales@kalmarantiques.com.au • www.kalmarantiques.com.au

KALMAR



ANTIQUES

For the Finest Range of Antique Jewellery, Watches and Pocket Watches in Sydney



9ct gold amethyst and pearl pendant c.1910, \$2600.

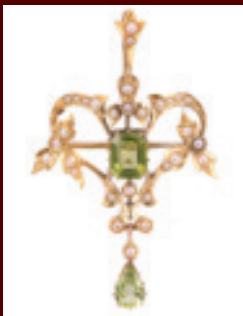


15ct and silver amethyst and diamond pendant c.1890, \$4650.



9ct rose gold amethyst and pearl pendant c.1890, \$1900.

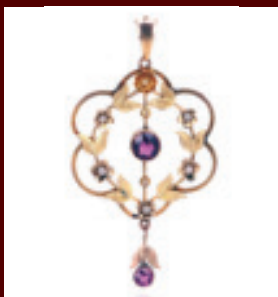
15ct peridot and pearl pendant that can be worn as a brooch made by Duggin, Shappere & Co c.1910, \$1950.



15ct ruby, pearl and diamond pendant with a locket in the back c.1870, \$5750.



9ct yellow gold citrine and pearl pendant c.1910, \$1600.



9ct garnet and pearl pendant c.1910, \$1250.



15ct pearl and ruby pendant c.1890, \$2550.

Shop 25 • Level 2 Queen Victoria Building • 455 George Street
Sydney NSW 2000 • Tel: 02 9264 3663 • Fax: 02 9264 2663

sales@kalmarantiques.com.au • www.kalmarantiques.com.au

KALMAR

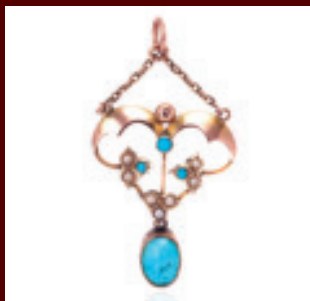


ANTIQUES

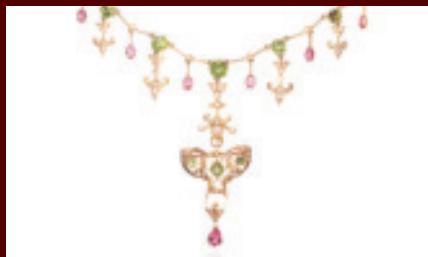
For the Finest Range of Antique Jewellery, Watches and Pocket Watches in Sydney



15ct hardstone cameo pendant/brooch c.1880, \$2650.



9ct turquoise and pearl pendant c.1910, \$625.



Rare and important 15ct suffragette necklace that has a detachable lower pendant that can also be worn as a brooch, c.1900 \$12,300.



(L) 15ct pearl pendant that can convert to a brooch c.1910, \$1800. (R) 15ct pearl brooch c.1900, \$1150. Both pieces are made by Duggin, Shappere & Co.



15ct green tourmaline and blue indicolite tourmaline pendant c.1900, \$2350.



15ct yellow gold sapphire and pearl pendant c.1910, \$1450.

Shop 25 • Level 2 Queen Victoria Building • 455 George Street
Sydney NSW 2000 • Tel: 02 9264 3663 • Fax: 02 9264 2663

sales@kalmarantiques.com.au • www.kalmarantiques.com.au

For the Finest Range of Antique Jewellery, Watches and Pocket Watches in Sydney



15ct yellow gold 1.00ct ruby and 0.62ct diamond bracelet c.1910, \$17,600.



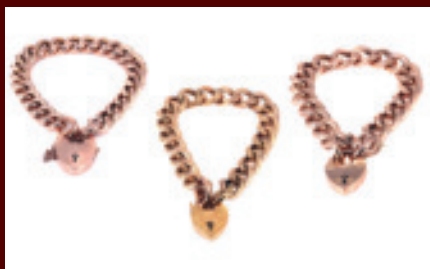
18ct rose and yellow gold 1.90ct unheated treated Ceylonese sapphire and diamond bracelet c.1910, \$26,500.



18ct diamond bracelet made by Kutchinsky in London, 1959, \$15,250.



15ct bracelet c.1920, \$2850.



(L) 15ct curb link padlock bracelet c.1910, \$3950. (C) 9ct curb link 'night and day' padlock bracelet c.1910, \$2850. (R) 15ct curb link padlock bracelet c.1906, \$4400.

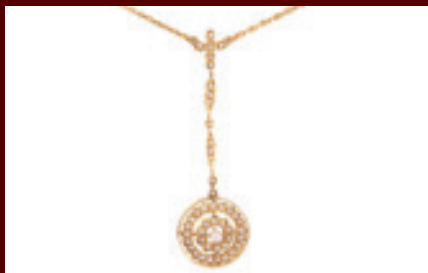


(L) 9ct rose gold gate bracelet c.1920, \$2900. (R) 9ct rose gold gate link bracelet c.1920, \$2750.

For the Finest Range of Antique Jewellery, Watches and Pocket Watches in Sydney



15ct pearl fringe necklace c.1880, \$4650.



15ct pearl drop necklace made by Duggin, Shappere & Co c.1910, \$3650.



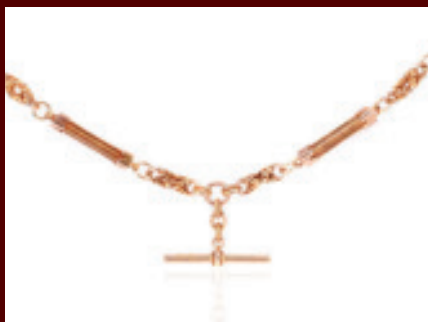
9ct aquamarine and pearl necklace
c.1910, \$3350.



9ct moonstone fringe necklace
c.1910, \$5650.



Rare and beautiful 15ct rose gold, green gold and platinum Albertina set with two magnificent tassels c.1850, \$14,200.



Rare 15ct early Australian fancy Albert chain c.1890, \$9850.

For the Finest Range of Antique Jewellery, Watches and Pocket Watches in Sydney



Platinum Art Deco diamond and pearl earrings c.1930, \$22,000.



18ct diamond drop earrings c.1870, \$12,250.



18ct and platinum mine cut diamond earrings c.1920, \$9850.



18ct and silver diamond earrings c.1860, \$28,500.



18ct diamond earrings c.1920, \$10,250.

For the Finest Range of Antique Jewellery, Watches and Pocket Watches in Sydney



15ct lava cameo bracelet c.1860, \$3350.



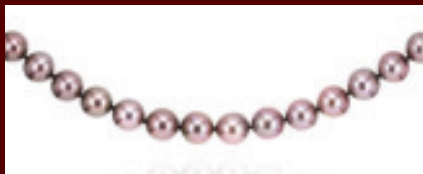
Sterling silver Scottish agate bracelet with a locket on the reverse side of the padlock c.1870, \$2650.



(L) 18ct micromosaic stick pin of the Temple of Vesta c.1850, \$1600. (R) 18ct and pearl Art Nouveau stick pin made in France c.1895, \$650.



Rare and important 18ct garnet and diamond snake necklace with a locket c.1860, \$28,500.



Strand of Tahitian black pearls \$12,250.



(L) 15ct natural pearl and enamel jabot brooch c.1920, \$1650. (R) 18ct and platinum diamond jabot brooch c.1920, \$750.

KALMAR



ANTIQUES

For the Finest Range of Antique Jewellery, Watches and Pocket Watches in Sydney



Shop 25 • Level 2 Queen Victoria Building • 455 George Street
Sydney NSW 2000 • Tel: 02 9264 3663 • Fax: 02 9264 2663

sales@kalmarantiques.com.au • www.kalmarantiques.com.au

For the Finest Range of Antique Jewellery, Watches and Pocket Watches in Sydney

Two fine quality pieces of early Australian antique silverwork

Both of these pieces are made in sterling silver around 1870 and both are attributed to Julius Schomburgk. An expert silversmith, Schomburgk made pieces for both Henry Steiner and Joachim Wendt. The item on the left is a fine quality centrepiece measuring 60cm tall depicting two Indigenous men hunting a goanna. Set with a glass bowl etched with egrets and flowers, this was presented as a silver wedding present in 1870.

The item below is an inkwell, two inkwells made with a kangaroo on top of one and an emu on the other, with the centre emu egg having a lyre bird on top.

Along the base is an Indigenous man hunting kangaroos.

Both are rare important works of early Australian silverwork. \$32,500 each.



For the Finest Range of Antique Jewellery, Watches and Pocket Watches in Sydney



(L) Sterling silver and gold locket made in 1905, \$1250. (R) Sterling silver Art Nouveau locket c.1900, \$1400.



Sterling silver hand engraved locket c.1890, \$1200.



(L) Sterling silver locket made in 1883, \$1100. (R) Sterling silver locket c.1890, \$950.



Sterling silver bracelet made by Volmer Bahner c.1965, \$490.



(L) Sterling silver bangle c.1890, \$1500. (R) Sterling silver bangle made in 1882, \$1550.



(L) Sterling silver bangle c.1890, \$1200. (R) Sterling silver bangle made in 1884, \$1550.

For the Finest Range of Antique Jewellery, Watches and Pocket Watches in Sydney



18ct rare early Australian aquamarine and emerald brooch attributed to Lamborn and Wagner c.1870, \$5800.



Very large 18ct agate brooch c. 1870, \$2650.



15ct early Australian brooch set with a garnet and chrysoberyl with a hinged top revealing a locket c.1870, \$5850.



18ct diamond brooch with an enamel cupid c.1890, \$4400.



Rare and important early Australian gold and natural pearl brooch attributed to Alfred Lorking c.1855, \$8250.



15ct pearl set sword brooch made by Willis & Co c.1910, \$1850.



Rare brooch set with a cameo of Athena set in an early Australian 15ct gold frame with an emu on the top c.1865, \$7250.



Signed sterling silver and gold brooch by Rhoda Wager. It is rare to find one of her brooches in both gold and silver, c.1940, \$2900.



18ct ruby and diamond brooch with a locket on the reverse side c.1870, \$3250.

For the Finest Range of Antique Jewellery, Watches and Pocket Watches in Sydney



(L) 15ct and silver garnet and diamond fly brooch c.1880, \$3300. (C) Rare 9ct early Australian pearl and paste brooch of a budgerigar made by Aronson & Co c.1910, \$3300. (R) 15ct pearl and paste bee brooch by Willis and Sons c.1910, \$1950.



(L) 9ct rose and yellow gold swan and boomerang brooch by Willis and Sons c.1910, \$875. (R) 9ct wishbone, kookaburra and map of Australia brooch made by Willis and Sons c.1910, \$875.



(L) 15ct demantoid garnet and diamond brooch made by Duggin, Shappere & Co c.1900, \$1550. (R) 15ct demantoid and pearl Lily Of The Valley brooch made by Willis and Sons c.1900, \$1550.



18ct non-heat treated 1.97ct Ceylonese sapphire and diamond brooch c.1910, \$21,200.



14ct Austro-Hungarian enamel and ruby Blackamoor brooch c.1860, \$7200.



Platinum 'Tutti Frutti' brooch set with diamonds, sapphires and rubies c.1920, \$8600.



15ct and sterling silver demantoid garnet and diamond brooch c.1890, \$4700.

For the Finest Range of Antique Jewellery, Watches and Pocket Watches in Sydney



Miniature carriage clock with its original box made in France c.1900 and engraved on the front with a kangaroo on top of a boomerang and 1931, \$5150.



(L) Antique carriage clock made in France c.1890 and retailed by the early Australian company Gaunt, \$1850. (R) Antique repeater carriage clock made by Couaillet in France c.1890, \$5150.



Rare 18ct gold pocket watch fob that has no crown, but is wound and set by turning it in the centre, c.1870, \$6600.



18ct Charles Frodsham pocket watch made in 1892, \$9200.



Swiss travel clock with an alarm in its original fitted leather case c.1930, \$1450.



Antique French time and strike clock fitted with a mercury pendulum made in France c.1890, \$3800.

KALMAR



ANTIQUES

For the Finest Range of Antique Jewellery, Watches and Pocket Watches in Sydney



Stainless steel Rolex c.1982,
\$6200.



(L) 9ct rose gold watch
retailed by Saunders c.1914,
\$1850. (R) 9ct Rolex
c.1920, \$2650.



Stainless steel black dial
Rolex c.1968, \$5750.



(L) 18ct Rolex Date c.1978,
\$9850. (R) 18ct Rolex
c.1990, \$8750.



(L) Stainless steel triple
date with moonphase
Zenith El Primero watch
with box and papers
c.2000, \$9850.
(R) Breitling Top Time
2000 watch with the
'Reverse Panda' dial
c.1966, \$4900.



(L) 18ct Jaeger Le Coultre
triple date watch c.1945,
\$11,200. (R) Rare 14ct
Tissot World Time watch
made in 1953, \$14,500.

Shop 25 • Level 2 Queen Victoria Building • 455 George Street
Sydney NSW 2000 • Tel: 02 9264 3663 • Fax: 02 9264 2663

sales@kalmarantiques.com.au • www.kalmarantiques.com.au

For the Finest Range of Antique Jewellery, Watches and Pocket Watches in Sydney



Very rare 18ct yellow gold Omega Constellation made in 1973 and designed by Andrew Grima. Set with a gold dial, it also has a citrine glass and crown, and comes with Omega archive papers, \$28,500. *Andrew Grima (1921-2007) was known as an innovative jewellery designer, whose designs won him prestigious commissions from numerous patrons including Princess Margaret, Jacqueline Onassis and HM Queen Elizabeth II. Earning multiple awards and accolades, including a Royal Warrant, in 1969 Omega commissioned him to design a collection of 85 jewellery watches in a unique and captivating style. Titled 'About Time', the collection included designs that used a gemstone in place of a watch glass, that would allow the wearer to see "time through stone".*



Lady's 18ct Jaeger LeCoultre watch c.1980, \$4600.



IWC Yacht Club made in 1971, \$5500.



Stainless steel Omega Seamaster Chronometer c.1969, \$4400.



(L) Omega Day-Date Constellation watch made in 1970, \$3450. (C) Black dial Omega Constellation made in 1956, \$2650. (R) Omega Constellation made in 1960, \$3250.

KALMAR



ANTIQUES

For the Finest Range of Antique Jewellery, Watches and Pocket Watches in Sydney

Lady's 18ct diamond set Patek Philippe with archive papers, made in 1969, \$15,600.



Lady's 18ct Patek Philippe with hinged cover of the dial with archive papers. Made in 1962, \$15,800.



Rare 18ct Patek Philippe with centre sweep seconds made in 1952. The watch comes complete with its original papers and a complete dossier on its multiple service history by Patek Philippe, \$24,500.

Shop 25 • Level 2 Queen Victoria Building • 455 George Street
Sydney NSW 2000 • Tel: 02 9264 3663 • Fax: 02 9264 2663

sales@kalmarantiques.com.au • www.kalmarantiques.com.au

KALMAR



ANTIQUES

For the Finest Range of Antique Jewellery, Watches and Pocket Watches in Sydney



(L) Rare 14ct rose gold Eberhard hermetically sealed Calotte Patrouille watch c.1921, \$6200. (R) 14ct diamond set Ebel watch c.1920, \$4350.



14ct rose gold retro era watch with a hinge top set with rubies made by Lucien Piccard c.1950, \$8750.



Rare 18ct back wind Jaeger LeCoultre watch with a diamond set hinge top made in 1962, \$15,800.

Shop 25 • Level 2 Queen Victoria Building • 455 George Street
Sydney NSW 2000 • Tel: 02 9264 3663 • Fax: 02 9264 2663

sales@kalmarantiques.com.au • www.kalmarantiques.com.au

For the Finest Range of Antique Jewellery, Watches and Pocket Watches in Sydney



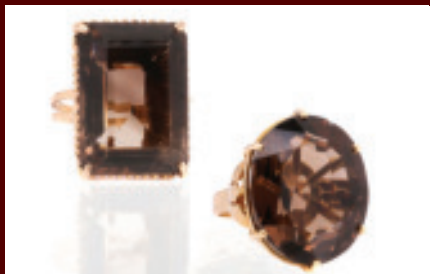
Sterling silver 4 piece condiment set made in 1918, \$2100.



18ct diamond set Art Nouveau era cufflinks c.1895, \$2200.



9ct rose gold antique cufflinks made in 1929, \$850.



(L) 18ct smoky quartz ring c.1980, \$2850.
(R) 18ct yellow gold smoky quartz ring c.1970, \$2200.



18ct cameo and pearl ring made in 1897, \$2750.